



SCIC ENR
Bois & Énergie
pays de Rance

Let's launch our cooperation

11/12/2019





SCIC ENR
Bois & Énergie
pays de Rance

Cooperative Community-oriented Enterprise

- 2008 : at the end of a 2-year conception and feasibility study period, Jérémy launched the SCIC;
- its working range covers **Le Pays de Rance**, including Le Pays de Dinan et le Pays de St Malo;
- Today the SCIC is
 - ➡ **3 Co-managers:** Emily DUTHION, Gérald SOLON & Jérémy DAUPHIN;
 - ➡ **12 employees;**
 - ➡ **110 partners or associates**, i.e. people or structures who own 1 or more shares -- the **stakeholders** -- **yet have 1 vote only.**





S.C.I.C. ENR Pays de Rance, cooperative community-oriented enterprise

- ➡ is an **enterprise** that shares most aspects of Social and Solidarity based Economy (ESS) and whose activity is centered on valorizing and promoting local renewable wood resources ;
- ➡ is based on a **charter** acknowledged by all partners;
- ➡ the key words for its activities (?) are
 - ➡ **sustainable** management of **local natural** resources with short-local production loop -- i.e. the production-delivery chain takes place within 40 km
 - ➡ **Certified** high quality products
 - ➡ **Promotion** of the **bocage** : plantation, replantation, maintenance;
 - ➡ **Innovation** in the ESS local network : public awareness campaigns on energy savings and GHG emissions reduction

Key words



S.C.I.C. ENR Pays de Rance, cooperative community-oriented enterprise

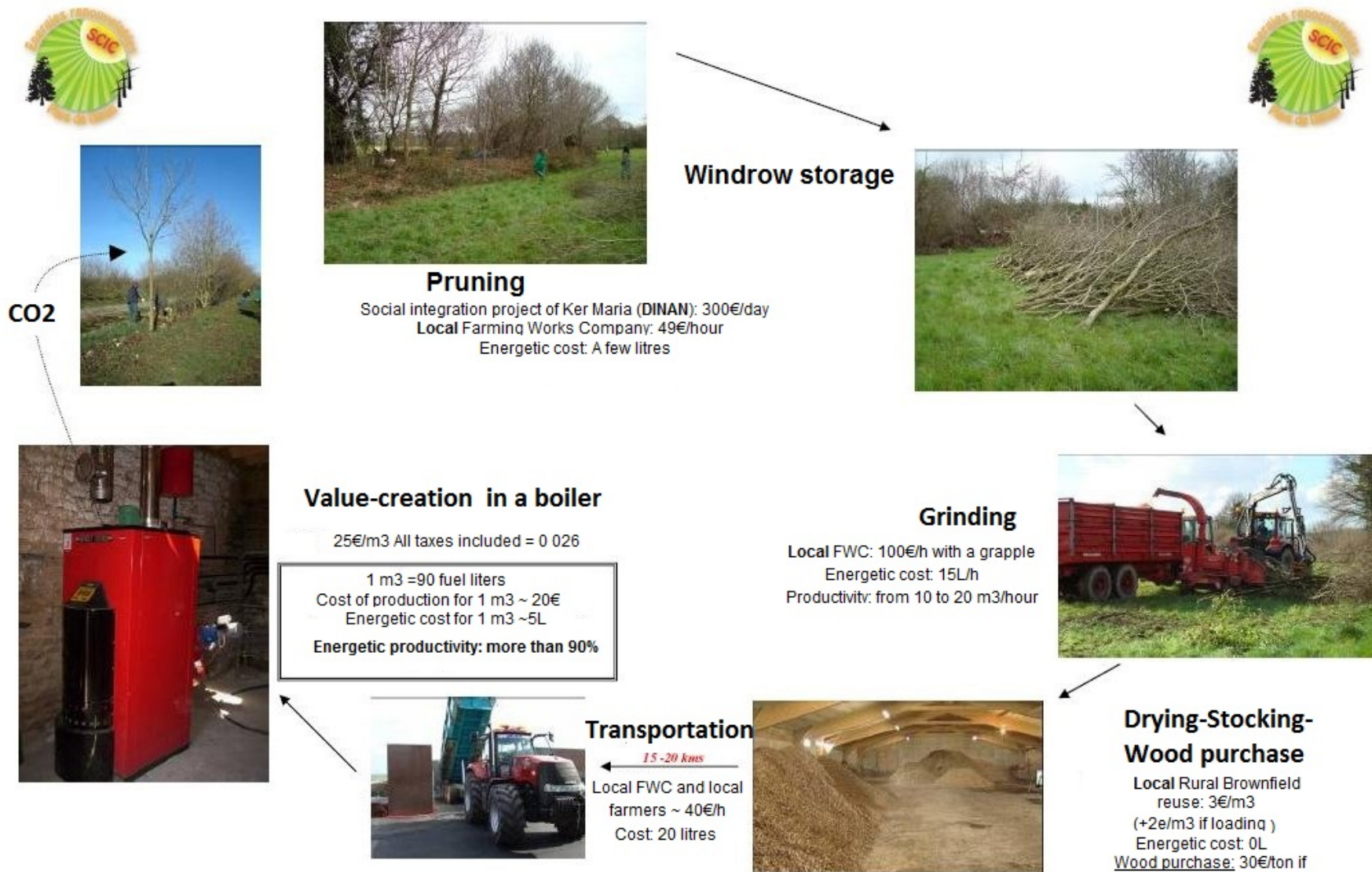
- ➡ has a **strong territorial anchoring** -- Pays de Dinan, (22), Pays de St Malo, (35), Région Bretagne
- ➡ a **growing recognition** through Région Bretagne, and wider : the SCIC won a national ESS prize;
- ➡ was originally founded on a **democratic economic structure**, the SCIC, in which each stakeholder has 1 vote -- regardless the number of shares -- and takes part in the decision making process.
- ➡ the SCIC's activities and operations are controlled by **an ethics committee**
- ➡ Among the current 110 stakeholders are towns, as well as local economic actors — farmers, local businesses...— and individuals. A bank, La Caisse d'Epargne, is among them.

Key words



SCIC ENR
Bois & Énergie
pays de Rance

The core activities of the SCIC

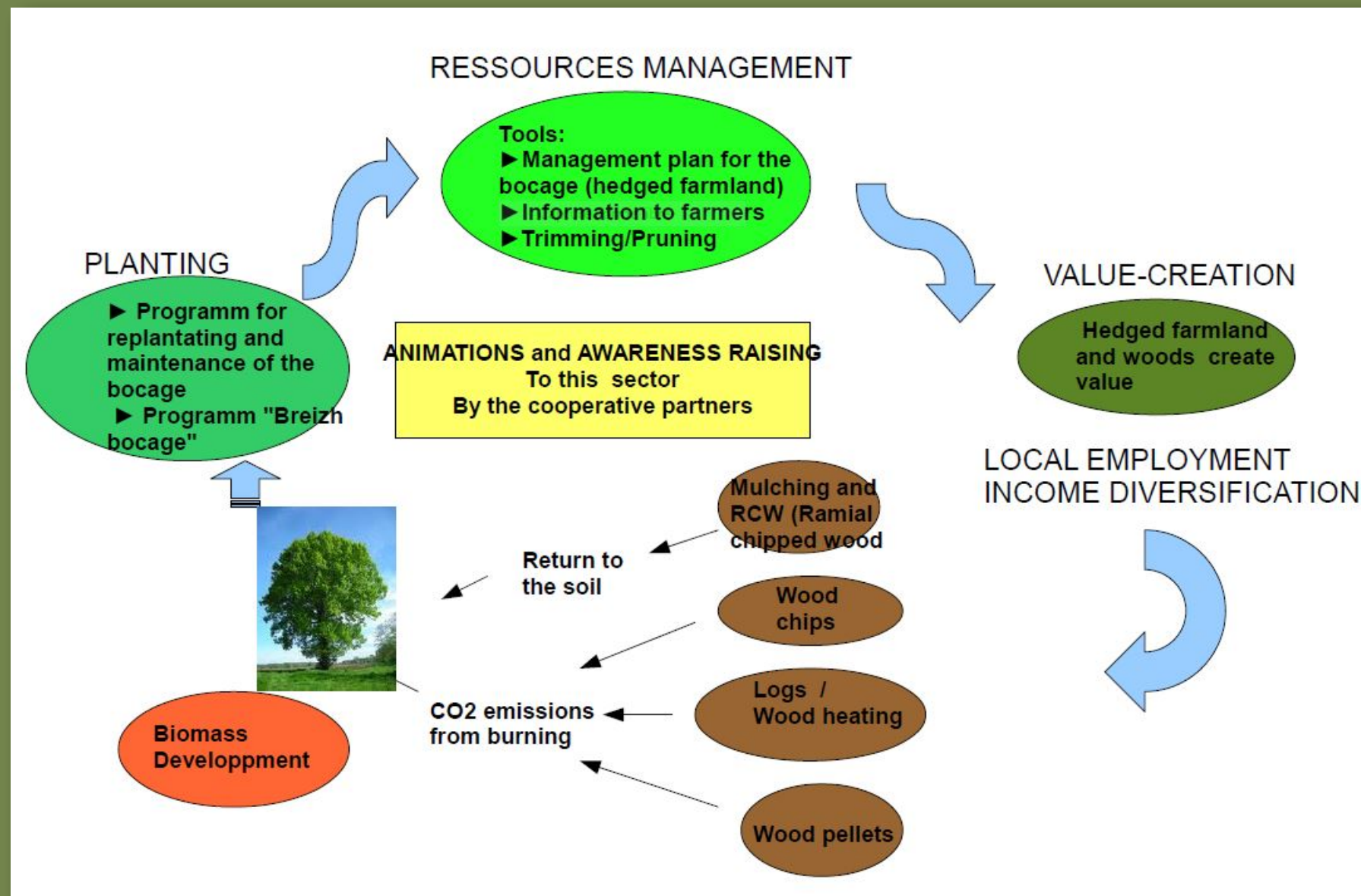


The cycle of the wood energy sector of the Pays de Dinan - SCIC EnR Pays de Rance
"A local economy at the service of the territory"



SCIC ENR
Bois & Énergie
pays de Rance

Our different missions

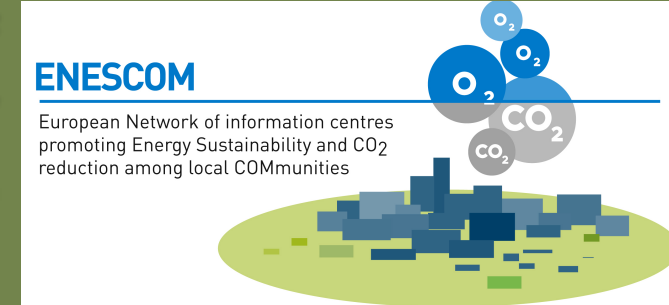




2 European projects

So far, the SCIC has taken part in 2 completed projects :

■ **ENESCOM:** European Network of information centres promoting Energy Sustainability and CO² reduction among local **COM**munities :



➡ The SCIC gathered 11 cities around Dinan, on their commitment to slash their greenhouse gas emissions and to take part in the sustainable development.

■ **INTERREG-CREST:** Community **RE**trofit through **S**ustainable Technology

Let's launch the third !





Key numbers

(on average, per year)

- Wood energy supply for 15 boilers (2000T)
- 100 km of hedges planted in winter
- 80 000 trees planted
- 6000 m³ of mulching
- 3000 m³ of logs
- 50 pedagogical sessions to raise awareness on local, sustainable energy in schools, other communities and public places



SCIC ENR
Bois & Énergie
pays de Rance

Key numbers after 10 years

- Accumulated revenue generated : **5 200 000€**
- Accumulated profits : **300 000€**, systematically reinvested in the cooperative (material, benefits for the employees, **company building**)
- The stakeholders **do not collect interests**
- **23** direct contracts CDI et CDD



Emily and Jérémy moving in their brand new premises





Cooperative network and notoriety

- our environmental local impact awarded the Scic the **national prize** at the 2018 National ESS Exhibition in Niort;
- The Scic helped create **Coat Nerh Breizh**, a federation of 6 structures similar to SCIC EnR throughout Brittany;
- Member of 2 ESS Poles (Dinan and St Malo);
- Administrator of the future **regional natural reserve**;
- Sustainable Development Commission member of the **CEPR**, club of 150 entreprises in Le Pays de Rance;
- Promotion of our cooperative throughout France and other countries in Europe (**EU Projects**)





Get the SCIC involved in such a cooperation project: what for ?

- **Share** returns on projects already completed
- **Develop** usable tools that will help better develop the wood as renewable resource line of activities
- **Discover and learn** from different techniques of valorization of the resource
- **Discover** new tools in communication and argumentation that will help convince new actors
- With the help of le PNR Boucles de Seine, **focus** on juridic topics, comparative analysis, diversification of economic and business activities dealing with **wood waste** as a resource



Get the SCIC involved in such a cooperation project: what for ?

➤ To sum up :

the project is to help the Dinan Agglomération meet the energy stakes the territory faces, with better managing its primary resource — biomass — potentials thanks to the SCIC's operational techniques



SCIC ENR
Bois & Énergie
pays de Rance

Core business: wood energy & logs for 1500 customers a year





SCIC ENR
Bois & Énergie
pays de Rance

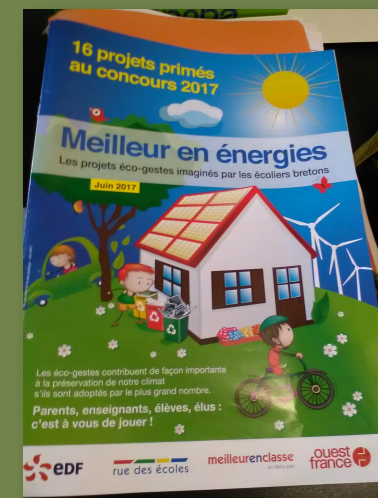
Mulching





SCIC ENR
Bois & Énergie
pays de Rance

Pedagogical activities





SCIC ENR
Bois & Énergie
pays de Rance

Replanting





SCIC ENR
Bois & Énergie
pays de Rance



Pruning

and chimney-sweeping



SCIC ENR
Bois & Énergie
pays de Rance

Timber



Does your tree hide a treasure ?



Training

Transmission of acquired experience to a public of students who are to become farmers.



LA FILIÈRE BOIS-ÉNERGIE

SCIC Énergies Renouvelables Pays de Rance
Emily DUTHION & Michel BOISSEL

Agriculture et territoire

Le 06/02/2018- Lycée des vergers



SCIC ENR
Bois & Énergie
pays de Rance

**COMPÉTENCES
EXPÉRIENCES
ENGAGEMENTS**

Une coopérative
spécialisée
dans le développement
durable de son
territoire



À l'attention de :